

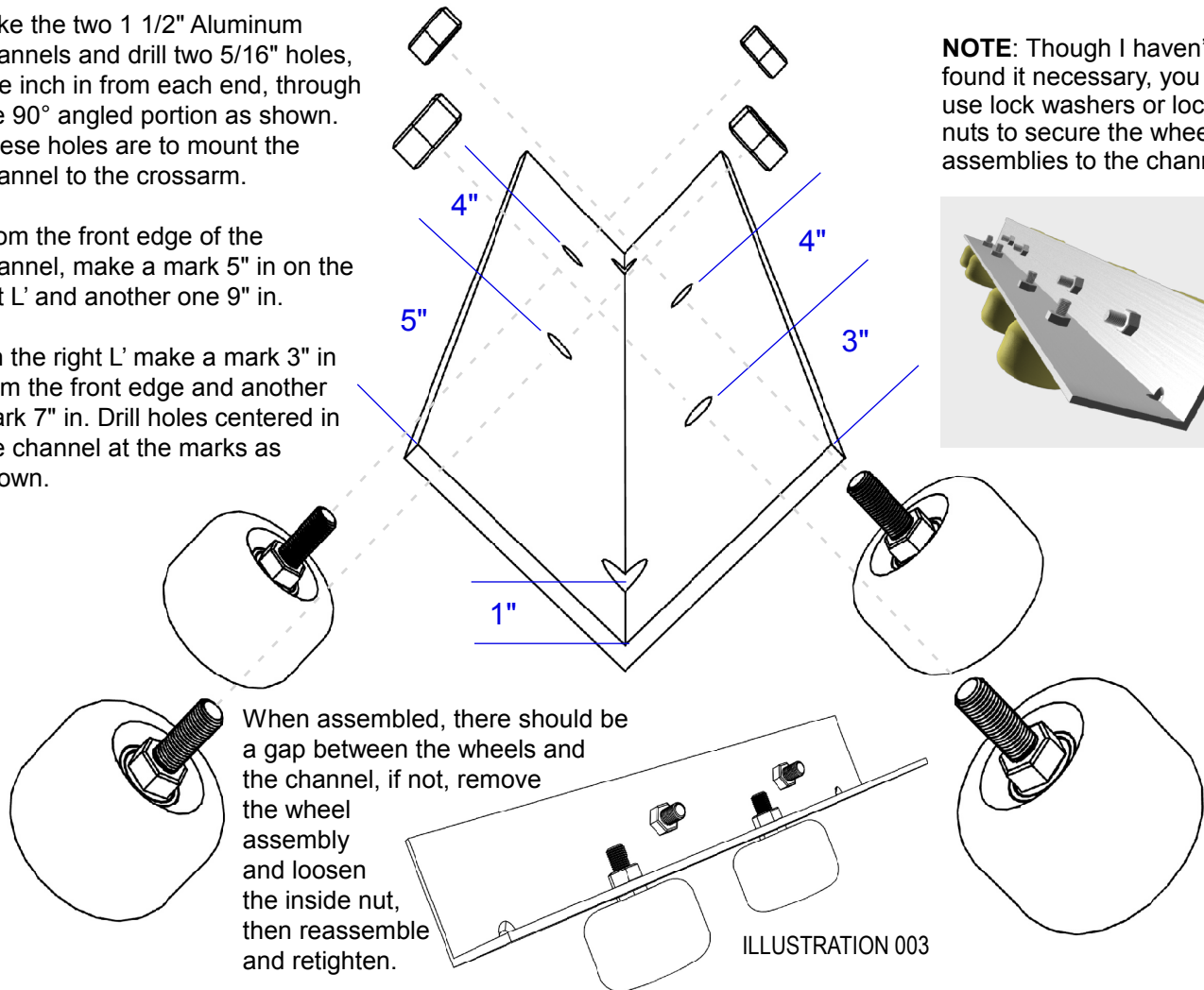
STEP TWO

Take the two 1 1/2" Aluminum channels and drill two 5/16" holes, one inch in from each end, through the 90° angled portion as shown. These holes are to mount the channel to the crossarm.

From the front edge of the channel, make a mark 5" in on the left L' and another one 9" in.

On the right L' make a mark 3" in from the front edge and another mark 7" in. Drill holes centered in the channel at the marks as shown.

ILLUSTRATION 002



NOTE: Though I haven't found it necessary, you may use lock washers or lock nuts to secure the wheel assemblies to the channel.

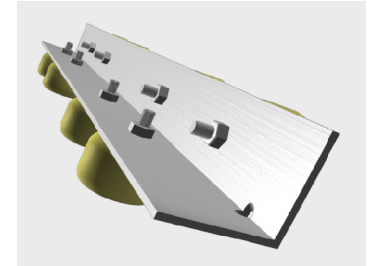


ILLUSTRATION 003

STEP THREE

Drill four 5/16" holes in the corners of each of the two crossarm boards as shown.

Drill a 5/16" hole in the ends of each of the two aluminum plates as shown.

Sandwich a plate and channel assembly on each end of the crossarm and secure with a bolt and nut.

NOTE: It is recommended that you paint all wood surfaces before assembly, especially if you plan to use your dolly outside in inclement weather.

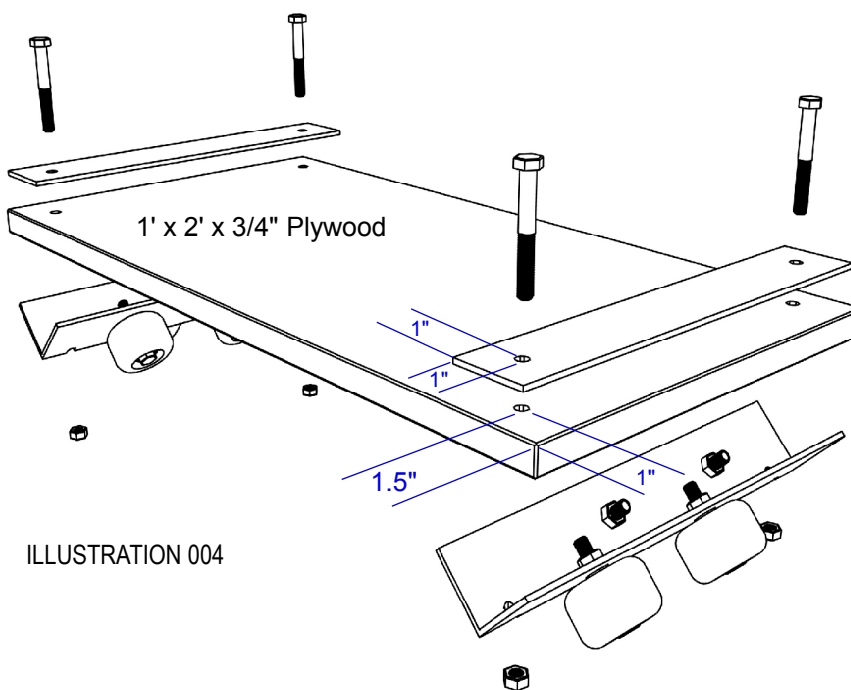


ILLUSTRATION 004